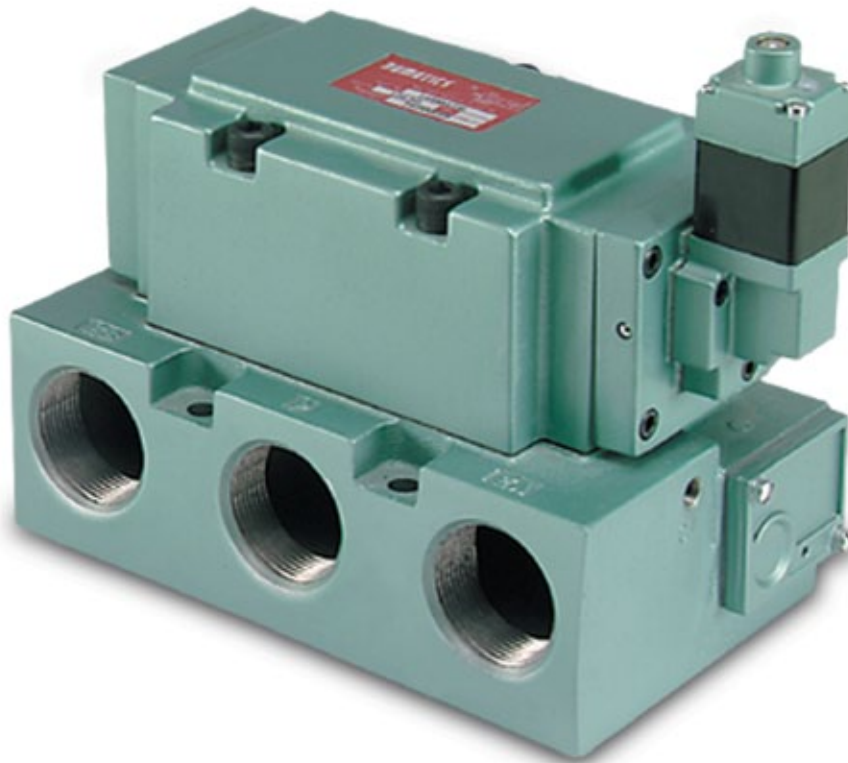


NUMATICS®

140 Series

High Flow, Solenoid Pilot or Pilot Actuated Valves



www.numatics.com


EMERSON™
Industrial Automation



青岛秉诚自动化设备有限公司
地址：中国·青岛市重庆南路99号海尔云街甲3号楼7F

服务热线：4006-918-365
网址：<http://www.asco.store>

传真：(86-532)585-10-365
Email：sales@bechinas.com

140 Series

| | |
|------------------------------|---|
| Technical and Operating Data | 3 |
| How to Order | 4 |
| Valve on Individual Base | 5 |
| Plugging Arrangements | 6 |
| Base Assembly Kits | 6 |
| Service Kits and Parts | 6 |
| Solenoid Capsule Assemblies | 6 |

5 Ported, 2 position, 4-way, Spool & Sleeve

Cv: 14.5 - 16.5

- Solenoid pilot or air pilot actuated
- Plug-in solenoid with indicator light
- Unlubricated or lubricated service
- Base with side and bottom ports and individual exhaust
- NEMA4 / IP65

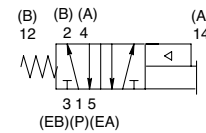


Technical Data

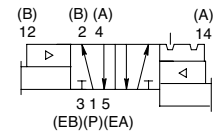
| Valve Data | 1 NPTF | 1-1/4 NPTF | 1-1/2 NPTF |
|--|----------------------------------|--|----------------------------------|
| Cv | 14.5 | 16.0 | 16.5 |
| Flow Capacity | 671.5 SCFM | 741 SCFM Upstream pressure to atmosphere @80 PSIG | 764 SCFM |
| Pilot Pressure Range: Models 140BA4 and 140PA4 | 20 to 125 PSIG | 20 to 125 PSIG | 20 to 125 PSIG |
| Pilot Pressure Range: Models 140BB4 and 140PP4 | 15 to 125 PSIG | 15 to 125 PSIG | 15 to 125 PSIG |
| Operating Pressure Range | 28" HG. Vacuum to 150 PSIG | 28" HG. Vacuum to 150 PSIG | 28" HG. Vacuum to 150 PSIG |
| Temperature Range (Ambient) | -10°F to +115°F | -10°F to +115°F | -10°F to +115°F |



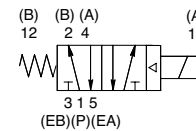
PA single air pilot
2 position 4-way



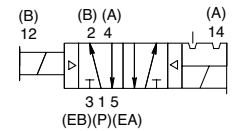
PP double air pilot
2 position 4-way



SPA single solenoid air pilot
2 position 4-way



SPA double solenoid air pilot
2 position 4-way

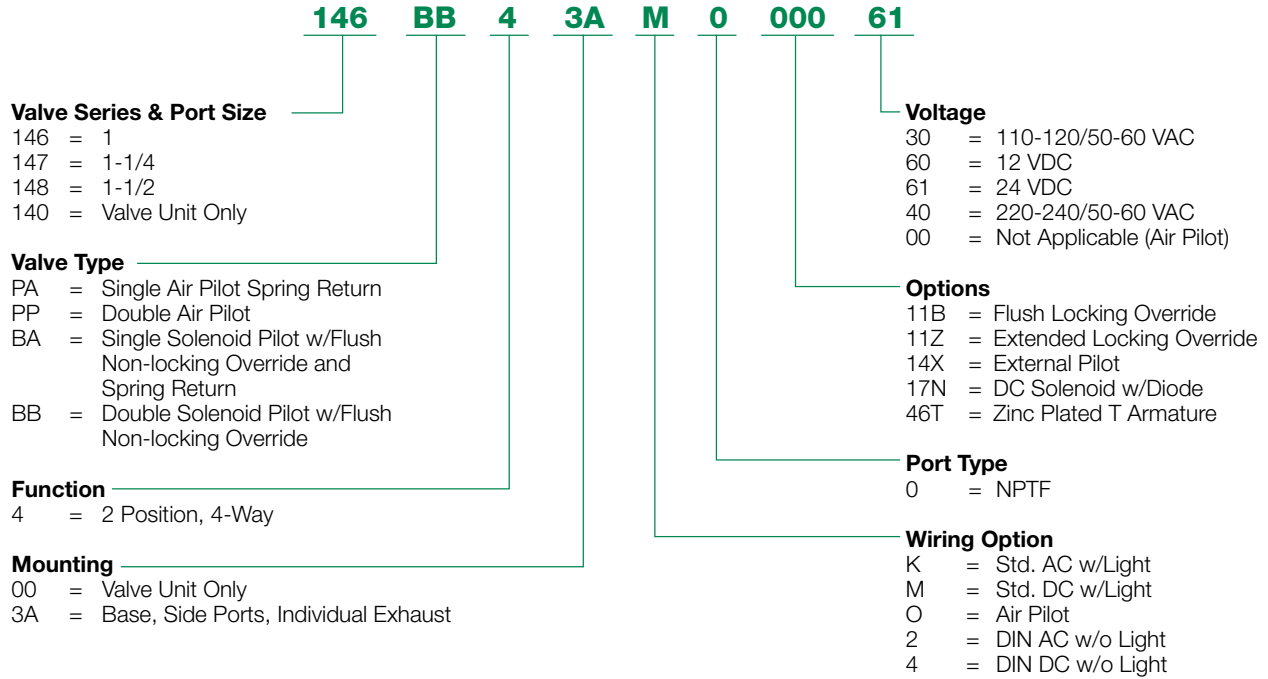


Operating Data: Solenoid-Pilot

| Standard Voltages | Inrush Current (amps) | Holding Current (amps) | DC Power (Watts) | Energize in Seconds 2-Position 140 Solenoid-Pilot Valves | De-Energize in Seconds 2-Position 140 Solenoid-Pilot Valves |
|-------------------|-----------------------|------------------------|------------------|--|---|
| 120/60 AC | 0.40 | 0.09 | N/A | 0.012 | 0.012 |
| 12 VDC | 0.50 | 0.50 | 6.0 W | 0.038 | 0.012 |
| 24 VDC | 0.25 | 0.25 | 6.0 W | 0.038 | 0.012 |

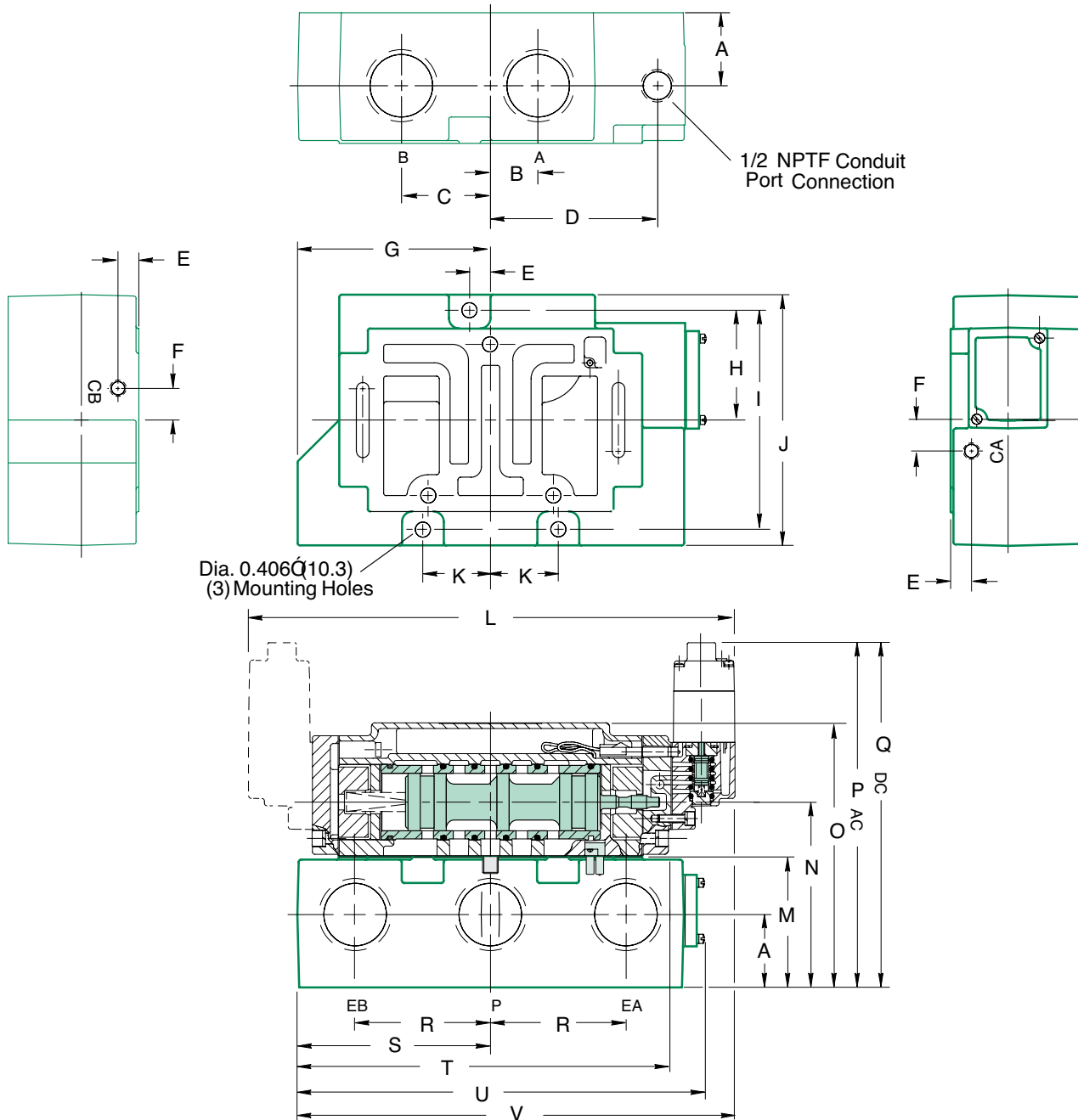
How to Order

Valves



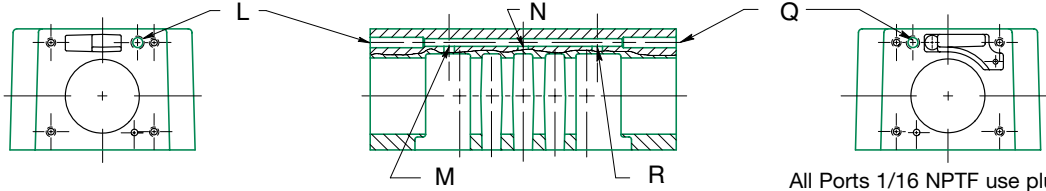
Dimensions: Inches (mm)

Valve on Individual Base



| A | B | C | D | E | F | G | H | I | J | K |
|------------------|----------------|-----------------|-----------------|-----------------|-----------------|-----------------|-----------------|-----------------|-----------------|------------------|
| 1.75 (44.4) | 1.13 (28.7) | 2.13 (54.1) | 4.00 (101.6) | 0.50 (12.7) | 0.75 (19.1) | 4.26 (108.2) | 2.62 (66.5) | 5.25 (133.3) | 6.00 (152.4) | 1.62 (41.1) |
| L | M | N | O | P | Q | R | S | T | U | V |
| 11.70 (297.0) | 3.13 (79.5) | 44.4 (112.8) | 6.34 (161.0) | 7.93 (201.4) | 8.62 (218.9) | 3.25 (82.6) | 4.62 (117.3) | 9.07 (203.4) | 9.77 (248.2) | 10.47 (266.0) |

Multi-Purpose Pilot Plugging Arrangements for Solenoid-Pilot



All Ports 1/16 NPTF use plug #129-118.

| Pilot Port | Internal Supply from Port P | | External Supply from Port CB* | | External Supply from Port CA* | | Internal Supply from Port EB | | Internal Supply from Port EA | |
|------------|-----------------------------|------|-------------------------------|------|-------------------------------|------|------------------------------|------|------------------------------|------|
| | BA4 | BB4 | BA4 | BB4 | BA4 | BB4 | BA4 | BB4 | BA4 | BB4 |
| L | Plug | Open | Open | Open | Plug | Open | Plug | Open | Plug | Open |
| M | Plug | Plug | Plug | Plug | Plug | Plug | Open | Open | Plug | Plug |
| N | Open | Open | Plug | Plug | Plug | Plug | Plug | Plug | Plug | Plug |
| Q | Open | Open | Open | Open | Open | Open | Open | Open | Open | Open |
| R | Plug | Plug | Plug | Plug | Plug | Plug | Plug | Plug | Open | Open |

*The standard base for internally piloted valves does not provide pilot ports. For external pilot supply and for all air piloted valves, use only bases with ports CA and CB tapped 1/8NPTF.

Base Assembly Kits

| Base Description | NPTF | | |
|--|---------|---------|---------|
| | 1 | 1-1/4 | 1-1/2 |
| No Electrical Receptacle: w/Pilot Ports | 203-626 | 203-627 | 203-628 |
| With Electrical Receptacle: w/Pilot Ports | 203-629 | 203-630 | 203-631 |
| With Electrical Receptacle: No Pilot Ports | 203-635 | 203-636 | 203-637 |

Service Kits and Parts

| Description | Part No. |
|--|-----------|
| Pilot Section | SPA55-KP |
| Single Air-Pilot: Models 146PA4, 147PA4, 148PA4 | PA140-K1 |
| Double Air-Pilot: Models 146PP4, 147PP4, 148PP4 | PA140-K2 |
| Single Solenoid-Pilot: Models 146BA4, 147BA4, 148BA4 | SPA140-K1 |
| Double Solenoid-Pilot: Models 146BB4, 147BB4, 148BB4 | SPA140-K2 |

(Includes all internal parts except spool, sleeve and solenoid.)

Solenoid Capsule Assemblies

| Voltages | 120/50-60 | 230/50-60 | 12 VDC | 24 VDC |
|----------|-----------|-----------|---------|---------|
| Part No. | 237-614 | 237-615 | 226-754 | 226-755 |

NUMATICS®

World Class Supplier of Pneumatic Components



World Headquarters

USA Numatics, Incorporated

46280 Dylan Drive
Novi, Michigan 48377

P: 248-596-3200
F: 248-596-3201

Canada Numatics, Ltd

P: 519-758-2700
F: 519-758-5540

México - Ascomatica SA de CV

P: 52 55 58 09 56 40 (DF y Area metropolitana)
P: 01 800 000 ASCO (2726) (Interior de la República)
F: 52 55 58 09 56 60

Brazil Ascoval Ind.e Comercio Ltda

P: (55) 11-4208-1700
F: (55) 11-4195-3970

LT-140Series Rev 01/13
2.5M-TGI-10/09
© Numatics Inc. 2013

Numatics, Inc. | Tel (248) 596-3200 | www.numatics.com | email: insidesales@numatics.com

Numatics® is registered in the United States and elsewhere



青岛集诚自动化设备有限公司
地址：中国·青岛市重庆南路99号海尔云街甲3号楼7F

服务热线：4006-918-365
网址：<http://www.asco.store>

传真：(86-532)585-10-365
Email：sales@bechinas.com