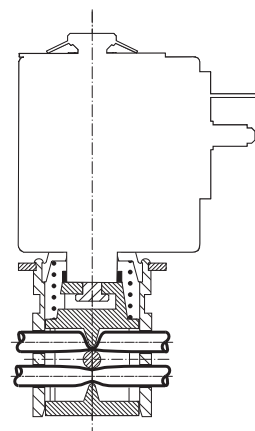
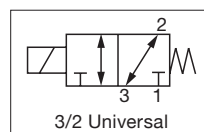


# ASCO™ MINIATURE SOLENOID VALVES

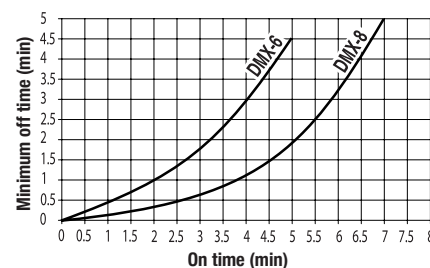
## PINCH VALVES, COMPACT 3-WAY SOLENOID

- The 384 Series is a 3-Way universal solenoid-operated pinch valve designed for use with highly aggressive or high-purity liquids in analytical and medical instrumentation, and industrial applications
- Hermetic separation of control mechanism and the fluid within the tubing prevents particulate contamination caused by friction of moving parts, assuring maximum purity of liquids
- Available in a large range of body sizes to accommodate a wide variety of tubing sizes
- Removable and rotatable electrical coils allow for easy installation and worry-free maintenance
- Bi-directional flow for exceptional versatility
- Meets all relevant CE directives, and is RoHS compliant
- Typical applications include:
  - Hemodialysis
  - Urinary Collection Systems,
  - Intravenous (IV) Systems
  - Drug Dispensing



### USE IN INTERMITTENT SERVICE

Minimum waiting time between each application of power



| Fluids*                                 | Temperature Range               |
|---|---------------------------------|
| Air, Inert Gases, Water, Oil or Liquids | 0 °C to 50 °C (32 °F to 122 °F) |

\* Ensure that the compatibility of the materials in contact with the fluids is verified

| General Valve Information* |  |  |
|----------------------------|--|--|
| Body                       | Aluminum, anodized   | POM (Graphite-reinforced polyacetal)   |
| Pinch Mechanism            | POM (Graphite-reinforced polyacetal)   |  |
| Others                     | Stainless Steel  |  |
| Guide Tube                 | Nickel-plated Brass  |  |
| Coil frame                 |  | Galvanized steel   |
| Recommended Tubing         | VMQ (silicone) (max. hardness: 50 Shore A)<br>(Tubing not supplied with valve) | VMQ (silicone) (max. Hardness: 50 Shore A)<br>30cm (12in) tubing supplied with valve |

| Electrical Characteristics      |  |                         |
|---------------------------------|--|-------------------------|
|                                 | Aluminium body   | POM body                |
| Coil Insulation Class           | F  | F                       |
| Connector                       | Spade plug;<br>cable Ø4-6mm (0.16-0.24in), Ø6-10mm (0.24-0.40in)   |                         |
| Connector Specification         | 4 W/8 W/6 W (DMX); DIN 43650, 9.4 mm, industry standard B;<br>6 W/13 W (AMX/FNX); ISO 4400/EN 175301-803, form A | 305mm (12in) Lead Wires |
| Electrical Safety               | IEC 335  | IEC 335                 |
| Electrical Enclosure Protection | Coil type 01 = IP65 /<br>Coil type 02-03 = IP65  | IP30 (EN 60529)         |
| Standard Voltages <sup>1</sup>  | 12 VDC, 24 VDC   | 12 VDC, 24 VDC          |
| Power Consumption               | 4W, 6W, 8W, 9W, 13W  | 3.5W                    |
| Response Time                   | < 20ms   | < 10ms                  |

<sup>1</sup> Other voltages on request

| Prefix Option | Power Ratings |            |            | Ambient Temperature Ranges | Replacement Coil |            | Type <sup>2</sup> |
|---------------|---------------|------------|------------|----------------------------|------------------|------------|-------------------|
|               | Inrush VA     | Holding VA | Hot/Cold W |                            | 12 VDC           | 24 VDC     |                   |
| SC            | -             | -          | 4          | -10 to 60<br>(14 to 140)   | 43005268         | 43005269   | 01 (DNX-4)        |
|               |               |            | 8          |                            | 500701-001       | 500701-002 |                   |
|               |               |            | 6          |                            | 500701-003       | 500701-004 |                   |
|               |               |            | 9          |                            | 43005143         | 43005144   |                   |
|               |               |            | 13         |                            | 43005316         | 43005317   | 03 (FNX)          |

<sup>2</sup> Refer to the dimensional drawings on the following page

01086GB-2019-R01

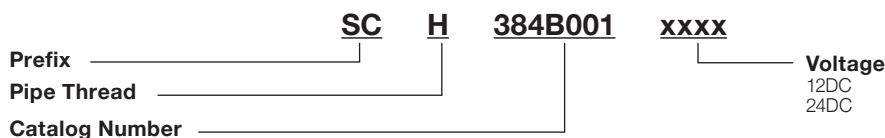
| Specifications |              |             |                              |            |             |              |     |                |                  |                  |
|----------------|--------------|-------------|------------------------------|------------|-------------|--------------|-----|----------------|------------------|------------------|
| Tube I.D.      | Tube O.D.    | Pinch Force | Operating Pressure bar (psi) |            |             | Power Rating |     | Catalog Number |                  |                  |
|                |              |             | min.                         | max.       |             |              |     |                |                  |                  |
| mm (inches)    | mm (inches)  | daN         |                              |            | inert gases | liquids      | W   | Aluminium body | POM body         |                  |
|                |              |             |                              |            |             |              |     |                | 24 VDC           | 12 VDC           |
| 0.76 (0.030)   | 1.65 (0.065) | 0.12        | 0                            | 0.8 (11.6) | 0.8 (11.6)  | -            | 4   | SCH384B004     | -                | -                |
| 1.02 (0.040)   | 2.16 (0.085) | 0.18        | 0                            | 0.8 (11.6) | 0.8 (11.6)  | -            | 4   | SCH384B001     | -                | -                |
| 1.57 (0.062)   | 3.18 (0.125) | 0.22        | 0                            | 0.8 (11.6) | 0.8 (11.6)  | -            | 8   | SCH384B0023    | -                | -                |
| 1.98 (0.078)   | 3.18 (0.125) | 0.18        | 0                            | 0.8 (11.6) | 0.8 (11.6)  | -            | 6   | SCH384B0033    | -                | -                |
| 3.4 (0.132)    | 4.7 (0.183)  | 0.4         | 0                            | 0.8 (11.6) | 0.8 (11.6)  | -            | 9   | SCH384A005     | -                | -                |
| 4.8 (0.187)    | 7.9 (0.313)  | 0.85        | 0                            | 0.8 (11.6) | 0.8 (11.6)  | -            | 13  | SCH384B006     | -                | -                |
| 6.4 (0.250)    | 9.5 (0.375)  | 1.1         | 0                            | 0.8 (11.6) | 0.8 (11.6)  | -            | 13  | SCH384B007     | -                | -                |
| 1.6 (0.063)    | 3.2 (0.126)  | 0.22        | 0                            | 1.5 (21.8) | 1.5 (21.8)  | -            | 3.5 | -              | P384A024LCA00V1  | P384A024LCA00V3  |
| 1.6 (0.063)    | 3.2 (0.126)  | 0.22        | 0                            | 1.5 (21.8) | 1.5 (21.8)  | -            | 3.5 | -              | P384A025LCA00V14 | P384A025LCA00V34 |

<sup>3</sup> Observe the minimum of time stated, see graph above

<sup>4</sup> The flange is rotatable with 90° (please see "Pic. 2" on following page)

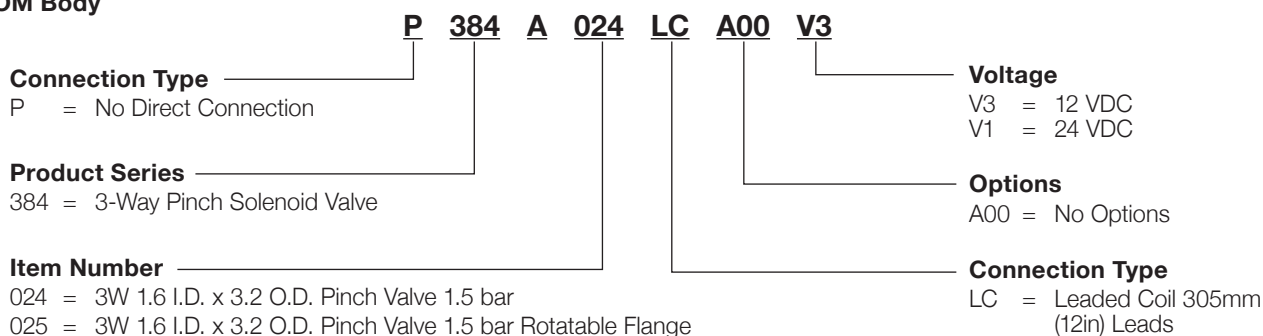
## How to Order

### Aluminum body



## How to Order

### POM Body



# ASCO™ MINIATURE SOLENOID VALVES

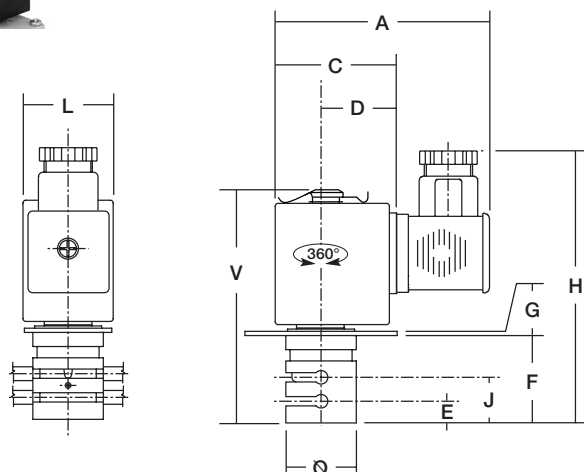
PINCH VALVES, COMPACT 3-WAY SOLENOID

## Dimensions (Aluminium body): mm (inches)

### Type 01

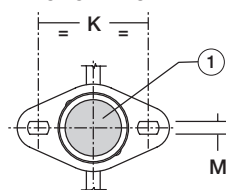
Prefix "SC" solenoid  
IEC 335/DIN 43650  
IP65

**Type 01: SCH384B001/0002/003/004**



① Impulse Manual Operator

### Bottom View



### Type 02-03

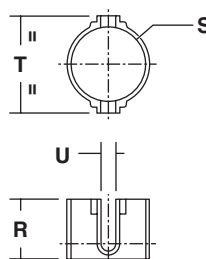
Prefix "SC" solenoid  
IEC 335/ISO 4400  
IP65

**Type 02: SCH384A005**

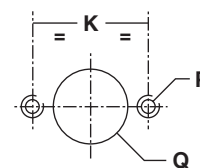
**Type 03: SCH384B006/B007**



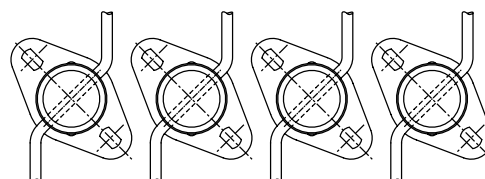
### Tube Guiding Device



### Arrangement for Wall-Fitting



### Example of Banked Assembly



| Type | Prefix Option | Catalog Number         | Ø            | A              | C              | D            | E              | F              | G             | H            | K              | L            | M             | P  | Q              | R              | S            | T            | U             | V              | Weight <sup>1</sup><br>kg |
|------|---------------|------------------------|--------------|----------------|----------------|--------------|----------------|----------------|---------------|--------------|----------------|--------------|---------------|----|----------------|----------------|--------------|--------------|---------------|----------------|---------------------------|
| 01   | SC            | SCH384B001/002/003/004 | 16<br>(0.63) | 49.5<br>(1.95) | 23.5<br>(0.92) | 15<br>(0.59) | 11<br>(0.24)   | 20<br>(0.79)   | 1<br>(0.04)   | 66<br>(2.60) | 24<br>(0.43)   | 17<br>(0.67) | 3.3<br>(0.13) | M3 | 16.5<br>(0.65) | 10.7<br>(0.42) | 16<br>(0.63) | 24<br>(0.94) | 2.2<br>(0.09) | 51.2<br>(2.02) | 0.06                      |
| 02   | SC            | SCH384A005             | 25<br>(0.98) | 78<br>(3.07)   | 43<br>(1.69)   | 27<br>(1.06) | 17.5<br>(0.41) | 32<br>(1.26)   | 1.5<br>(0.06) | 99<br>(3.90) | 39<br>(1.54)   | 32<br>(1.26) | 3.3<br>(0.13) | M4 | 25.5<br>(1.00) | 14<br>(0.55)   | 25<br>(0.98) | 33<br>(1.30) | 3.2<br>(0.12) | 82.5<br>(3.25) | 0.30                      |
| 03   | SC            | SCH384B006/B007        | 30<br>(1.18) | 84<br>(3.31)   | 49<br>(1.93)   | 28<br>(1.10) | 24.5<br>(0.96) | 43.5<br>(1.71) | 1.5<br>(0.06) | 99<br>(3.90) | 45.5<br>(1.79) | 42<br>(1.65) | 4.5<br>(0.18) | M4 | 30.5<br>(1.20) | 24<br>(0.94)   | 30<br>(1.18) | 39<br>(1.54) | 6<br>(0.24)   | 99<br>(3.90)   | 0.45                      |

| Tube Guiding Device |                           |
|---------------------|---------------------------|
| Catalog Number      | Weight <sup>1</sup><br>kg |
| C140094             | 0.005                     |
| C140095             | 0.009                     |
| C140096             | 0.015                     |

<sup>1</sup> Including coil(s) and connectors

## Options (Aluminium body)

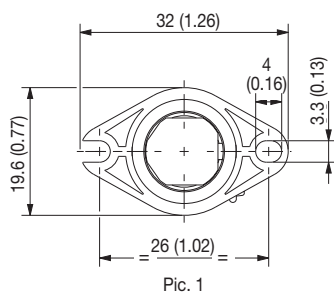
- Flexible tubes having to use an external guiding device for optimum support (see dimensions):
  - With an outside diameter lower than 2.2mm (0.087in) (catalog numbers **SCH384B001** to **..B004**)
  - With an outside diameter lower than 3.5mm (0.138in) (catalog number **SCH384A005**)
  - With an outside diameter lower than 6mm (0.240in) (catalog numbers **SCH384B006** and **..007**)
  - Contact us for information regarding the usage of different tubing other than those recommended
- Plug with visual indication and peak voltage suppression or with cable length of 2m (78.7in)

## Installation (Aluminium body)

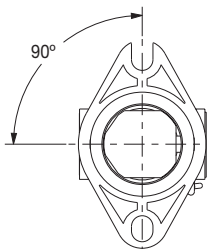
- The solenoid valves can be mounted in any position without affecting operation, however, for optimum performance it is recommended that they be fitted with the solenoid operator at the top
- Fixing plate built in between the body and the coil for assembly in a bank on a base plate
- Flexible tubes are not included in our supply
- In case the tubing is not placed in its seat, the solenoid valve could operate incorrectly.

01086GB-2019-R01

**Dimensions (POM body): mm (inches)**

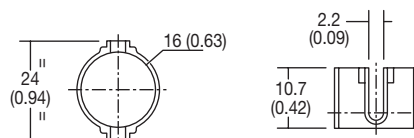


Pic. 1

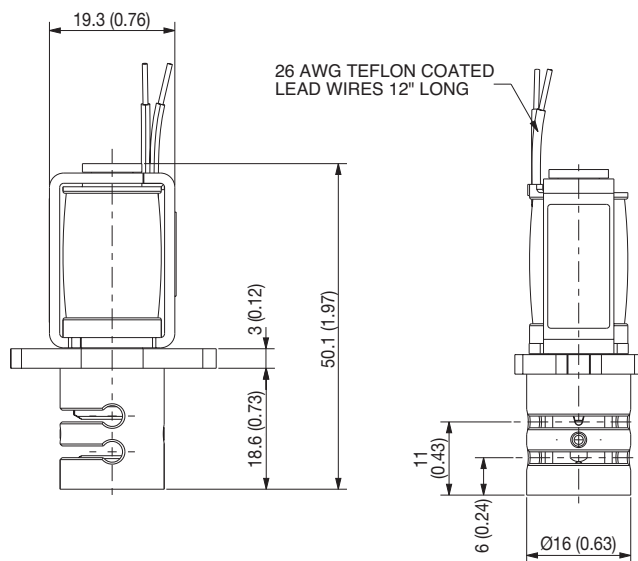
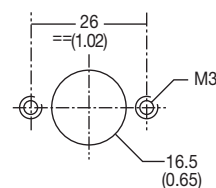


Pic. 2

**Tube Guiding Device**



**Arrangement for Wall-fitting**



| Catalog Number     | Weight <sup>1</sup> |
|--------------------|---------------------|
|                    | kg                  |
| P384A024LCA00V1/V3 | 0.04                |
| P384A025LCA00V1/V3 |                     |

<sup>1</sup> Including coil(s) and connectors

| Tube Guiding Device |                     |
|---------------------|---------------------|
| Catalog Number      | Weight <sup>1</sup> |
|                     | kg                  |
| 25978-01            | 0.005               |

**Options (POM body)**

- Flexible tubes having to use an external guiding device for optimum support (see dimensions);
- With an outside diameter lower than 2.2mm (0.087in)
- Contact us for information regarding the usage of different tubing other than those recommended

**Installation (POM body)**

- The solenoid valves can be mounted in any position without affecting operation, however, for optimum performance it is recommended that they be fitted with the solenoid operator at the top
- Fixing plate built in between the body and the coil for assembly in a bank on a base plate
- In case the tubing is not placed in its seat, the solenoid valve could operate incorrectly.