

FEATURES

- Sandwich-type plate for pressure isolation on port 1.
- Pressure isolating plate designed to exhaust on ports 3 and 5.
- The pressure isolating plate is fitted between the subbase and the valve.
- Allows removal of valves without affecting system operation.
- **Lockable with D6 padlock in open or closed position.**
- Not suitable for W3-type valves (centre closed).

GENERAL

Operating pressure -0,950 to 12 bar
Ambient temperature range -10°C to +60°C

CONSTRUCTION

MATERIALS IN CONTACT WITH FLUID	
(*) Ensure that the compatibility of the fluids in contact with the materials is verified	
Body	Aluminium
Screw	Steel
Seals	NBR

SPECIFICATIONS

size	code
ISO1	88100963

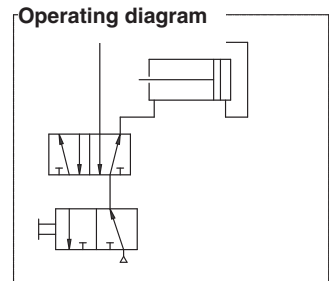
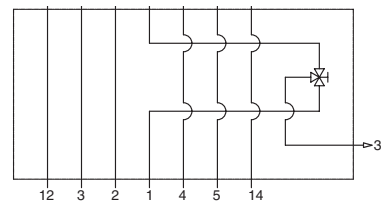
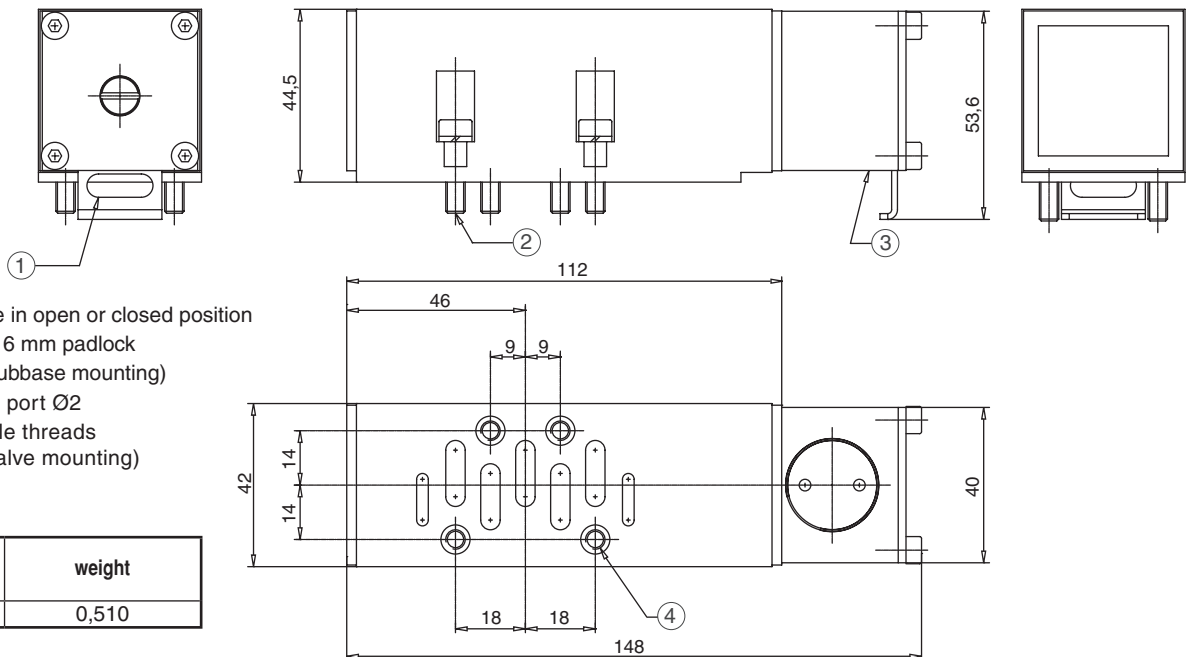


Diagram of pressure isolating plate
Valve side interface



Subbase side interface

DIMENSIONS (mm), WEIGHT (kg)



series	weight
ISO 1	0,510

01423GB-2017/R01
Availability, design and specifications are subject to change without notice. All rights reserved.

All leaflets are available on: www.asco.com

