



# POWER-SAVE CONNECTORS

Industry standard form B (11 mm)  
ISO 4400 / EN 175301-803, form A,  
sizes 22 and 30

Series  
**881**

## FEATURES

- The main advantages of a connector with voltage reduction are:
  - Power savings (lower current consumption)
  - Low heat development in the solenoid valve

## GENERAL

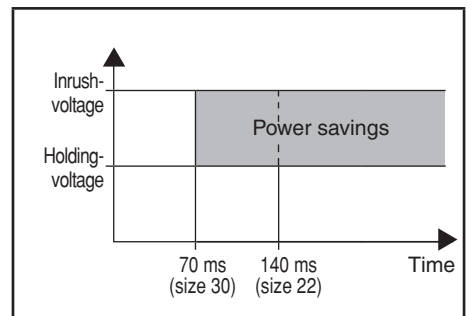
Once a DC-type solenoid valve is activated, only the holding current, which corresponds to 50% of the inrush voltage, is necessary to keep the valve in position. The power-save connector switches to holding voltage after approx. 70 ms (size 30) or 140 ms (size 22). The holding power is thereby reduced to a quarter of the inrush power. During power reduction, the valve's coil is piloted via PWM voltage pulses.

## CONSTRUCTION

**Enclosure** PA (Polyamide)

## ELECTRICAL CHARACTERISTICS

	Size 22	Size 30
<b>Input voltage</b>	12/24 V DC $\pm$ 10%	10 to 30 V DC
<b>Output voltage</b>	12 V DC $\pm$ 10%	6 to 30 V DC
<b>Power rating</b>	Max. 12 W	Max. 30 W
<b>Connector</b>	Spade plug	Spade plug
<b>Electrical safety</b>	Industry standard, form B	ISO 4400/EN 175301-803, form A
<b>Number of contacts</b>	2+1 common earth	2+1 common earth
<b>Electrical enclosure protection</b>	IP65	IP65
<b>Cable diameter</b>	6 - 8 mm	6 - 8 mm
<b>LED green</b>	Solenoid valve actuation	Solenoid valve actuation
<b>LED red</b>	-	Overcurrent or overvoltage
<b>Voltage reduction</b>	After 140 ms	After 70 ms
<b>PWM frequency</b>	7 KHz	50 KHz



## SPECIFICATIONS

description	size	input voltage	holding voltage	catalogue number
Power-save connector with voltage reduction	22	12 V DC $\pm$ 10%	6 V	<b>88100944</b>
		24 V DC $\pm$ 10%	12 V	<b>88100934</b>
	30	12 V DC $\pm$ 10%	4 V	<b>88100945</b>
		30 V DC $\pm$ 10%	15 V	
		10 V DC $\pm$ 10%	5 V	

01037GB-2016/R02  
Availability, design and specifications are subject to change without notice. All rights reserved.

All leaflets are available on: [www.asco.com](http://www.asco.com)



青岛秉诚自动化设备有限公司  
地址：中国·青岛市重庆南路99号海尔云街甲3号楼7F

服务热线：4006-918-365  
网址：<http://www.asco.store>

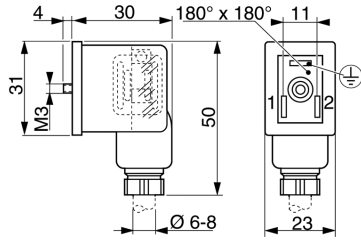
传真：(86-532)585-10-365  
Email：[sales@bechinas.com](mailto:sales@bechinas.com)

V1136-1

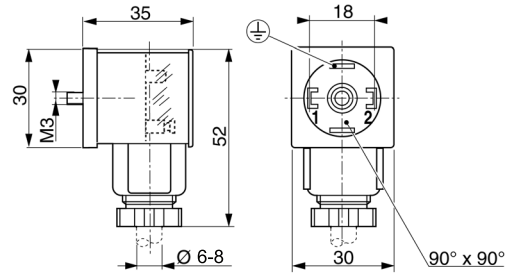
J

### DIMENSIONS (mm), WEIGHT (kg)

#### SIZE 22



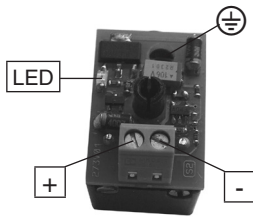
#### SIZE 30



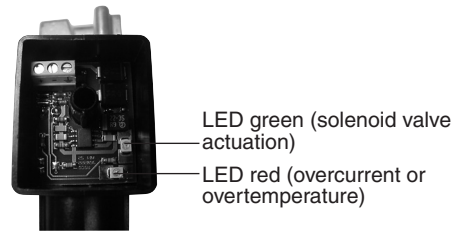
weight	
size 22	size 30
0,025	0,033

### ELECTRICAL CONNECTION

#### SIZE 22



#### SIZE 30



Screw terminals: up to 1 mm<sup>2</sup> cable

+ = Pilot voltage + (12 V/24 V)

- = Pilot voltage - (GND)

⊕ = Earth terminal, straight through

Screw terminals: up to 1 mm<sup>2</sup> cable

+ = Pilot voltage + (10-30V)

- = Pilot voltage - (GND)

⊕ = Earth terminal (PE)



① = Valve voltage +

② = Valve voltage -

③ = Earth terminal (PE)



① = Valve voltage +

② = Valve voltage -

③ = Earth terminal (PE)