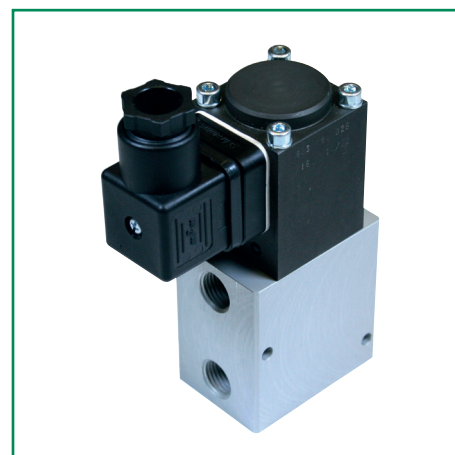


FEATURES

- Proportional valve without integrated control electronics. The valve can be used in an open control loop with a control unit or in a closed control loop with a CONTROL D control device and an external sensor.
- A modular arrangement of the individual components (proportional valve, control device, sensor) can be of advantage in special applications, e.g. in high ambient temperature environments.

GENERAL

Fluids	Air or neutral gas, filtered at 50 μ m, lubricated or unlubricated
Max. allowable pressure	8 or 16 bar (G1/4) 12 bar (G1/2 - G1)
Pressure range	0-6 or 0-16 bar (G1/4) 0-12 bar (G1/2) - 0-10 bar (G1)
Temperature / fluid	-10°C to +60°C
Temperature / ambient	-10°C to +60°C
Flow (Qv at 6 bar)	700 to 5600 l/min (ANR)



CONSTRUCTION

Body	Aluminium, anodised
Internal parts	Stainless steel and brass
Seals	NBR (nitrile)

ELECTRICAL CHARACTERISTICS

nominal diameter DN (mm)	voltage (stabilised) *	max. power (W)	max. current (mA)	insulation class	protection degree	electrical connection
6	24 V = +/-10%	24	1000	F	IP 65	connector size 30, ISO4400/EN175301-803, form A, rotatable by 90°
12		34	1400			
20		44	1800			

(1) residual ripple: 10 %

SPECIFICATIONS

Ø ports	Ø orifice DN (mm)	flow		control range (bar)	max. inlet pressure (bar)	catalogue no.
		Kv coefficient	at 6 bar (l/min - ANR)			
G 1/4	6	10	700	0 - 6	8	60200002 (2)
				0 - 16	16	60200001
G 1/2	12	20	1400	0 - 12	12	60200004
G 1	20	80	5600	0 - 10	12	60200007

(2) Version with low hysteresis

PRODUCTS SUITABLE FOR CONTROL APPLICATIONS

designation	series	illustration	
CONTROL D	603		see catalogue page
Electronic proportional control unit	908		see catalogue page

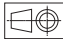
00248GB-2016/R01
Availability, design and specifications are subject to change without notice. All rights reserved.

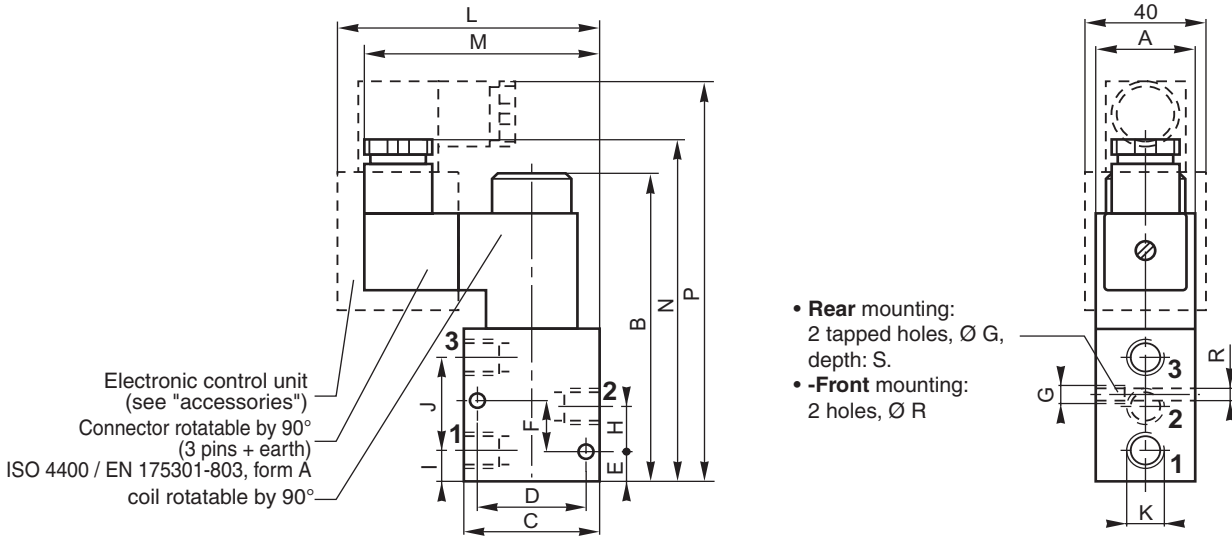
OPTIONS AND ACCESSORIES

- FPM seals - catalogue no. **460594**
- Digital control device CONTROL^D for DIN EN 50022 rail mounting
 - Used as a current regulator in open-loop applications
 - Used with an external sensor for closed-loop applications
- Electronic proportional control unit (908 Series, current adjustment from 0 to 1100 mA).

INSTALLATION

- The valves can be mounted in any position without affecting operation
- The valve body has 2 mounting holes in body
- Threaded pipe connection is standard: G = G (ISO 228/1)
- Installation/maintenance instructions are included with each valve

DIMENSIONS (mm), WEIGHT (kg) 



- **Rear mounting:**
2 tapped holes, Ø G, depth: S.
- **Front mounting:**
2 holes, Ø R

Ø DN	A	B	C	D	E	F	G	H	I	J	K	L	M	N	P	R	S	weight
6	35	115	52	43	10	20	M5	16	11	34	G1/4	107	82	123	153	4	10	0,700
12	45	151	70	57,5	12	28	M6	22,5	15	48,5	G1/2	119	96	151	190	4,5	10	1,500
20	60	188	96	79	15	33	M8	30,5	20	60	G1	-	116	184	-	6,5	15	3,300