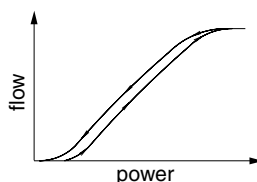


FEATURES

- Proportional valve for use with neutral or aggressive liquids and gases in industrial processes and in analytical and medical systems.
- RoHS compliant.
- Variable flow, proportional to the coil current.
- Valves do not require a minimum operating pressure.
- Hermetic separation of control mechanism and fluid:
 - Prevents particulate contamination caused by friction of moving parts, assuring maximum purity of fluid.
 - Ensures reliable operation in applications with highly aggressive fluids.
- Reduced heat transfer between control mechanism and fluid.
- Good self-draining capability and easy-to-flush internal cavity.
- Low internal volume.
- Specific flapper mechanism: no pump effect, no stick effect.
- Electrical spade-plug connection (cable-ends: contact us).



GENERAL

Differential pressure	0 to 4,5 bar (suitable for vacuum applications)
Maximum viscosity	20 cSt (mm²/s)
Response time	< 20 ms
Internal volume	< 0,48 ml (couplings not included)

fluids (*)	temperature range (TS)	seal materials (*)
liquids or gases (filtered 50 µm)	+5°C to + 50°C	FFPM (perfluoroelastomer)
		FPM (fluoroelastomer)
		EPDM (ethylene-propylene)

MATERIALS IN CONTACT WITH FLUID

(*) Ensure that the compatibility of the fluids in contact with the materials is verified.

Body	PEEK
Diaphragm	FFPM or FPM or EPDM
Seals	FFPM or FPM or EPDM

OTHER MATERIALS

Internal parts	Stainless steel
----------------	-----------------

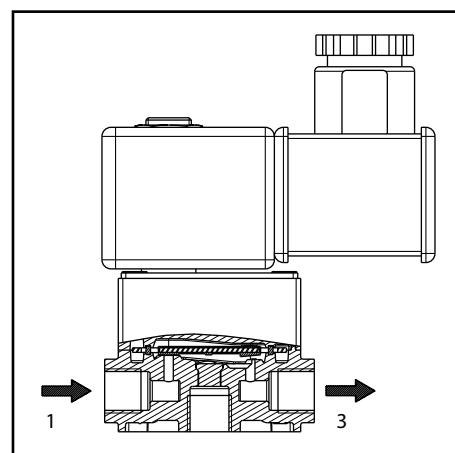
ELECTRICAL CHARACTERISTICS

Coil insulation class	F
Connector	Spade plug (cable Ø 6-10 mm) ISO 4400 / EN175301-803 Form A (Type 02), distance between contacts 18 mm, cable ends: contact us.
Electrical safety	IEC 335
Electrical enclosure protection	IP65 (EN 60529)
Standard voltages	DC (=) : 12V, 24V -5% / +10% (other volrages: contact us)
Power	9W at 20°C
Duty cycle	100% at ambient temperature +5°C to +55°C
Regelbereich	0 - 375mA with 24V coil 0 - 750mA with 12V coil pulse-width modulation (1000 Hz)
Flow regulation characteristic	Hysteresis typ. 20%; Repeatability typ. 5%; Sensitivity typ. 1%

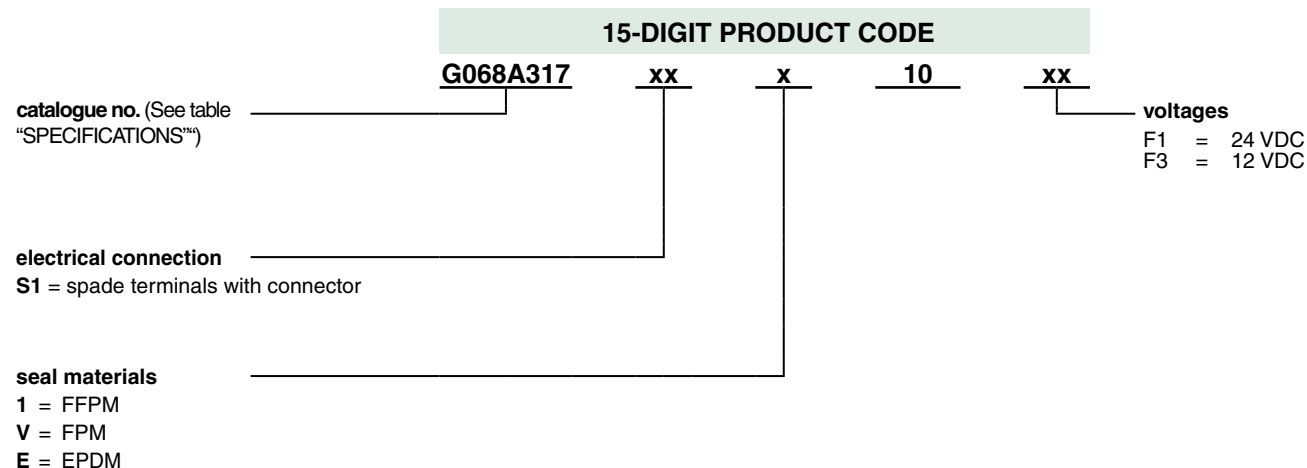
SPECIFICATIONS

pipe size	orifice size	flow coefficient Kv		operating pressure differential (bar)		power coil (W)	catalogue number
							body PEEK
	(mm)	(m³/h)	(l/min)	min.	max. Gases, liquids (*)		x: see ORDERING
					=	=	
2/2 NC - Normally closed							
G 1/8	2	0,069	1,15	0	4,5	9	G068A317xxx10xx
	3	0,123	2,05	0	2,0	9	G068A318xxx10xx
pad mounting ⁽¹⁾	2	0,069	1,15	0	4,5	9	R068A317xxx10xx
	3	0,123	2,05	0	2,0	9	R068A318xxx10xx

⁽¹⁾ 4 hexagon socket screws M3 x 8 mm, stainless steel, ISO 4762 (supplied).



ORDERING



Ordering example: R068A317S1E10F1 = orifice size 2 mm, pad-mounting body, spade terminals with connector, EPDM seals, 24 VDC

OPTIONS

- Other subbases, contact us
- Digital control module CONTROL^D for DIN EN 50022 rail mounting (see page 143)
 - Used as a current regulator in open loop applications
 - Used with an external sensor for closed-loop applications
- Electronic proportional control unit (see page 145)
catalogue number: X90850164500100 (setpoint 0 - 10V) / X90850164500200 (setpoint 4 - 20mA)
- Other voltages and coils with flying leads on request.
- Plug with visual indication and peak voltage suppression or with cable (see "Solenoids, Coils & Accessories" section in the catalogue "Fluid Automation, Solenoid and Pressure Operated Valves").

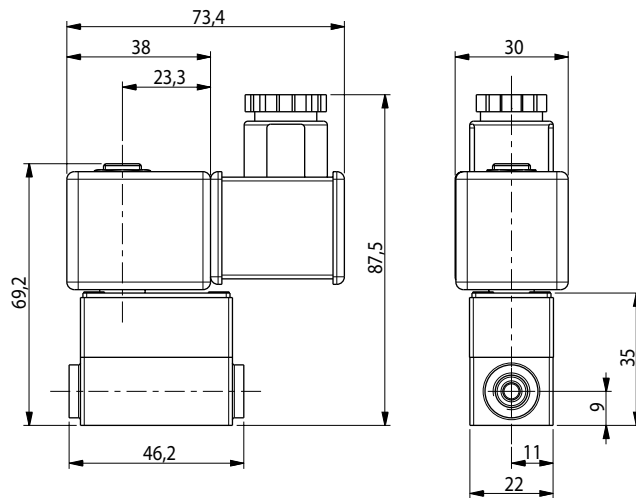
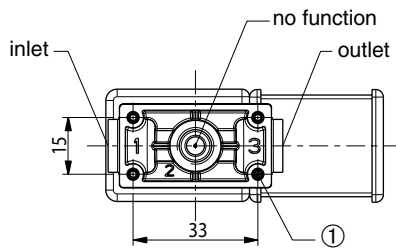
INSTALLATION

- The solenoid valves can be mounted in any position without affecting operation.
- Pad-mounting solenoid valve supplied with seal.
- Pipe connections 1/8 have standard thread according to ISO 228/1.

DIMENSIONS (mm), WEIGHT (kg)

G 1/8

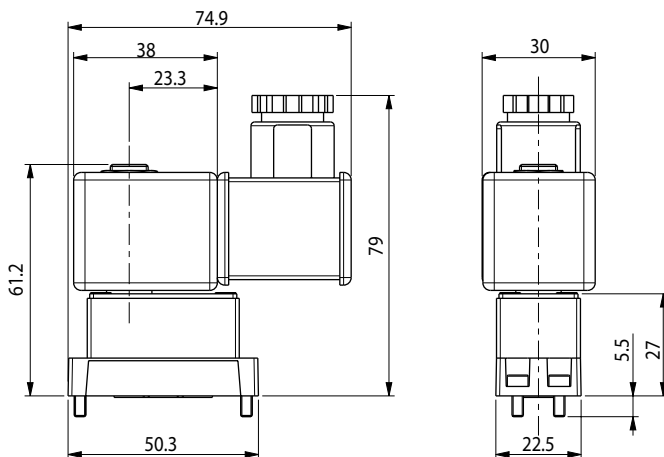
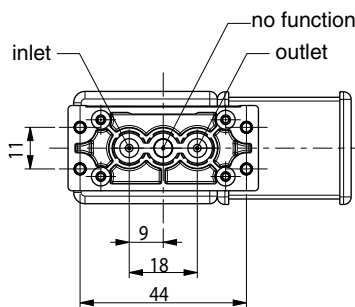
Weight: 0,189 kg



① 4 mounting holes, max. depth 7 mm, for self-tapping screw (type EJOT PT, K30)

Pad mounting body

Weight: 0,186 kg



SUBBASE MOUNTING PATTERN

