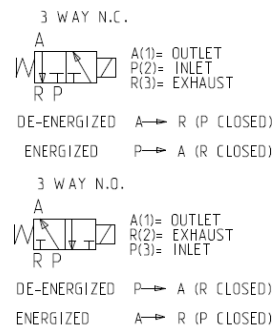
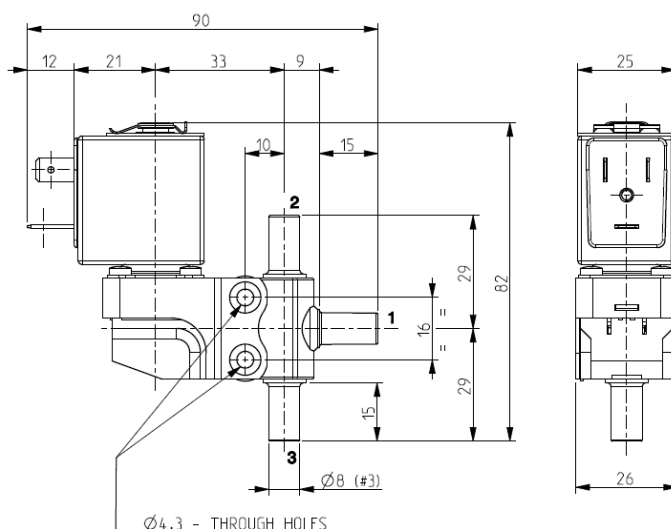




SOLENOID VALVE - DRY
3/2 – NC (Normally closed) - NO (Normally open)
Direct acting - Total isolation
Barbed port

D318



► **GENERAL FEATURES**

Direct acting, total isolation solenoid valve: the actuator is totally isolated from the fluid so that the wetted parts are just the body and the lever-seal.

Possibility of disassembling for inspection.

Core duly coated by PTFE (polytetrafluoroethylene) based self lubricating material.

Suitable to shut off liquid and gaseous fluids (verify the compatibility of fluid with materials in contact).

► **TECHNICAL FEATURES**

Maximum allowable pressure (PS) 12 bar
Opening time ~ 25ms
Closing time ~ 25ms
Fluid temperature -10°C +100°C
Max viscosity 5°E (~37 cStokes or mm²/s)

► **MATERIALS IN CONTACT WITH FLUID**

Body PEI (Polyetherimide)
Sealing EPDM or VMQ or FPM

► **COIL**

Continuous duty ED 100%
Encapsulation material PET (polyethylene terephthalate) fiberglass reinforced
Coil insulation class F (155°C)
Ambient temperature -10°C +60°C
Electric connections DIN 46340 - 3 poles connector
Protection degree IP 65 (EN 60529) with plug connector
Voltages DC 12-24V (+10% -5%)
AC 24V/50-60Hz - 110V/50-60Hz (120V/60Hz)
230V/50-60Hz (+10% -15%)
(Other voltages and frequencies on request)
On request UL approved version (see notes)

Port size	Orifice size (mm)	Differential pressure (bar)					Kv (m³/h)	Series and type		Power absorption			Sealings	Use Notes	Weight (kg)
		Δp min	Δp max							AC (VA)	DC (W)				
			Gases		Liquids			Inrush	Holding						
			AC	DC	AC	DC									
Barbed port	3,4	0	1	1	1	1	0,30	D318D03C	Z610A	16	10	6	EPDM	NC - 1	0,180
			D318S03C	VMQ											
			D318V03C	FPM											
			D318D03A	EPDM	NO - 2										
			D318V03A	FPM											

► **NOTES**

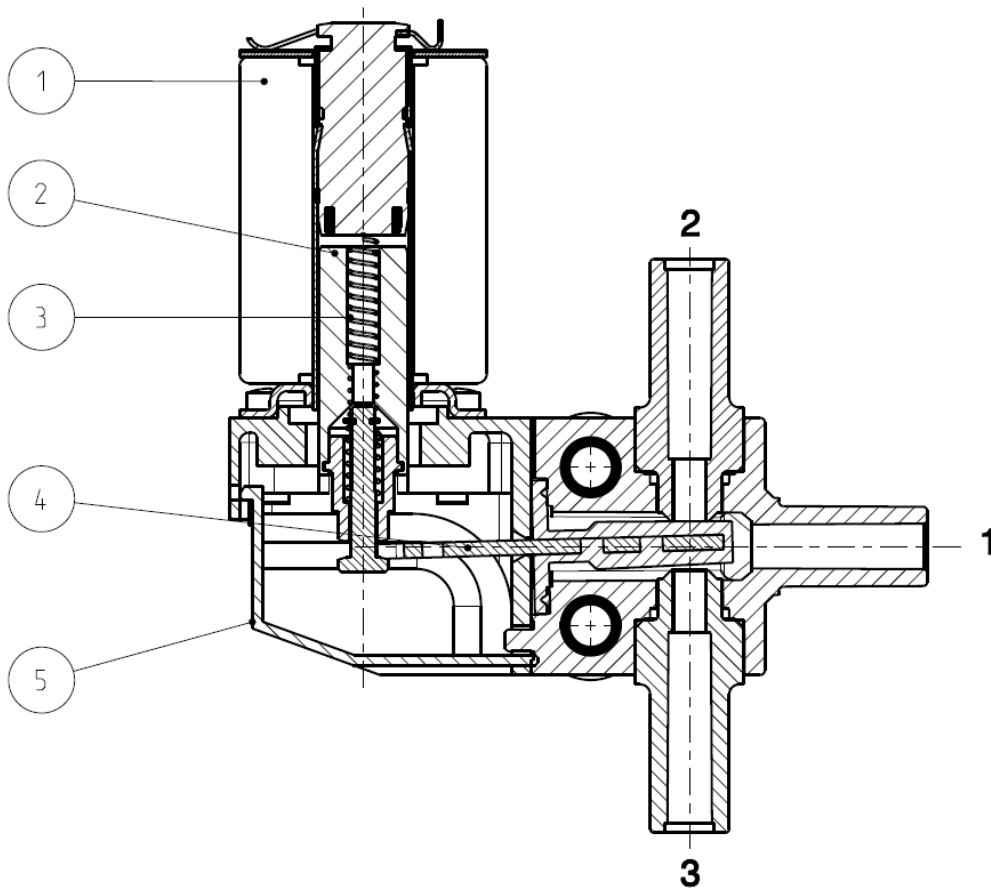
- Sealings : EPDM = Ethylene-propylene elastomer FPM = Fluoro-carbon elastomer VMQ = Silicone elastomer

- On request UL approved coil (Z614A - class "H" - ambient temperature -10°C +60°C)

1 - Suitable for diverting operation with Δp max=6 bar (inlet pressure at port 1 by using either port 2 or 3 as outlets free from throttling).

2 - Model available on request only: ask for minimum quantity.

► SPARE PARTS



Kit description		Kit P.N.	Consisting of:
Core kit	D318D-S-V03C	G3049601	Core pos.2 Core return spring pos.3
	D318D-V03A	G3049602	
Lever seal	D318D03C-D03A	2815206R	Lever seal pos.4
	D318S03C	2815202R	
	D318V03C-V03A	2815203R	
Cover kit		G2883901	N. 10 cover pos. 5
Coil		Z610A	Coil pos. 1

► MOUNTING

- Solenoid valve can be mounted in any position.

THE VALIDITY OF REPORTED DATA IS REFERRED TO THE DATE OF ISSUE. POSSIBLE UPDATES ARE AVAILABLE ON REQUEST.