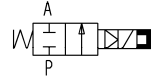
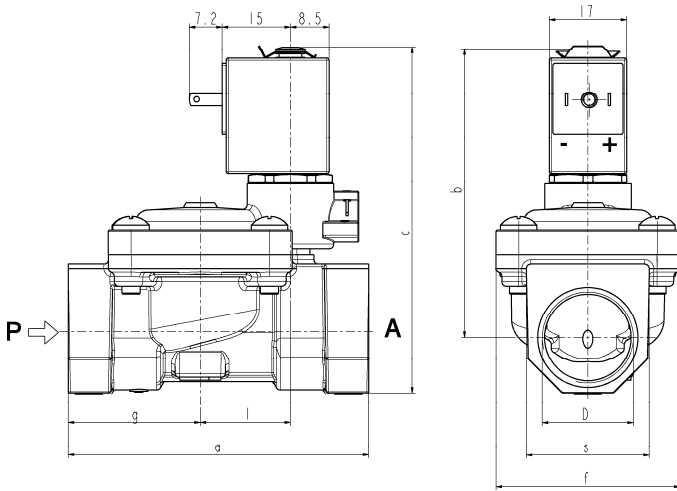




**SOLENOID VALVE**  
**2/2 - NC (Normally closed)**  
**Pilot operated**  
**G 3/8 ÷ G1**

**L182**  
**LATCHING MODEL**



| D     | a   | b    | c     | f  | g    | l    | s  |
|-------|-----|------|-------|----|------|------|----|
| G 3/8 | 60  | 60   | 71    | 40 | 25,5 | 20   | 22 |
| G 1/2 | 66  | 62,5 | 76    | 40 | 29   | 20   | 27 |
| G 3/4 | 79  | 66,5 | 83    | 50 | 35,5 | 24,5 | 33 |
| G 1   | 105 | 79,5 | 100,5 | 71 | 46   | 28   | 42 |

► **GENERAL FEATURES**

Diaphragm valve, pilot operated, having full orifice.  
 Suitable to shut off liquid and gaseous fluids (verify the compatibility of fluid with materials in contact).

► **TECHNICAL FEATURES**

Maximum allowable pressure (PS) 16 bar

**Response times**

Opening time (ms) 70

Closing time (ms) 670

Fluid temperature -10°C +90°C (NBR)

Max viscosity 5°E (~37 cStokes or mm<sup>2</sup>/s)

| G3/8 | G1/2 | G3/4 | G1  |
|------|------|------|-----|
| 70   | 70   | 70   | 90  |
| 670  | 600  | 500  | 420 |

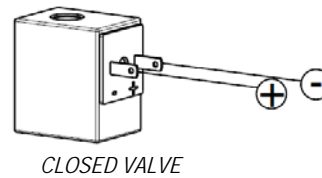
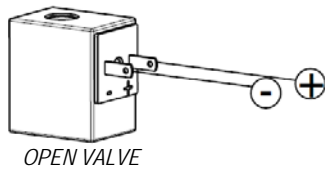
-10°C +90°C (NBR)  
 -10°C +140°C (EPDM)  
 5°E (~37 cStokes or mm<sup>2</sup>/s)

► **MATERIALS IN CONTACT WITH FLUID**

Body Brass  
 Sealing NBR or EPDM  
 Internal components Brass and stainless steel  
 Seat Brass  
 Guide assembly Stainless steel

► **COIL**

Duty Latching model, polarized type, operating with impulses  
 Minimum energizing time 20ms  
 Maximum energizing time 50ms  
 Encapsulation material PP-V0 (self-extinguishing-polypropylene)  
 Coil insulation class A (105°C)  
 Ambient temperature -10°C +60°C  
 Electric connections DIN 46340 - 3 poles micro plug connector  
 Protection degree IP 65 (EN 60529) with micro plug connector  
 Voltages DC 6-12V (+10% -10%)  
 (Other voltages on request)



| Port size<br>ISO 228 | Orifice<br>size<br>(mm) | Differential pressure (bar) |        |    |       | Kv<br>(m <sup>3</sup> /h) | Series and type |         | Power absorption |           |      | Sealings | Notes   | Weight<br>(kg) |    |   |     |   |       |
|----------------------|-------------------------|-----------------------------|--------|----|-------|---------------------------|-----------------|---------|------------------|-----------|------|----------|---------|----------------|----|---|-----|---|-------|
|                      |                         | Δp min                      | Δp max |    | Valve |                           | Coil            | AC (VA) |                  | DC<br>(W) |      |          |         |                |    |   |     |   |       |
|                      |                         |                             | Gases  |    |       |                           |                 | Inrush  | Holding          |           |      |          |         |                |    |   |     |   |       |
|                      |                         |                             | AC     | DC |       |                           |                 |         |                  |           | AC   |          |         |                | DC |   |     |   |       |
| G 3/8                | 13,5                    | 0,35                        | -      | 8  | -     | 8                         | L182D61         | -       | -                | 2         | EPDM | 1        | 0,300   |                |    |   |     |   |       |
| G1/2                 | 13,5                    |                             |        |    |       |                           |                 |         |                  |           |      |          | 0,360   |                |    |   |     |   |       |
| G 3/4                | 18                      |                             |        |    |       |                           |                 |         |                  |           |      |          | 0,500   |                |    |   |     |   |       |
| G3/8                 | 13,5                    |                             |        |    |       |                           |                 |         |                  |           |      |          | L182B61 | -              | -  | 2 | NBR | - | 0,300 |
| G 1/2                | 13,5                    |                             |        |    |       |                           |                 |         |                  |           |      |          |         |                |    |   |     |   | 0,360 |
| G 3/4                | 18                      |                             |        |    |       |                           |                 |         |                  |           |      |          |         |                |    |   |     |   | 0,500 |
| G 1                  | 24                      |                             |        |    |       |                           |                 |         |                  |           |      |          |         |                |    |   |     |   | 1,060 |

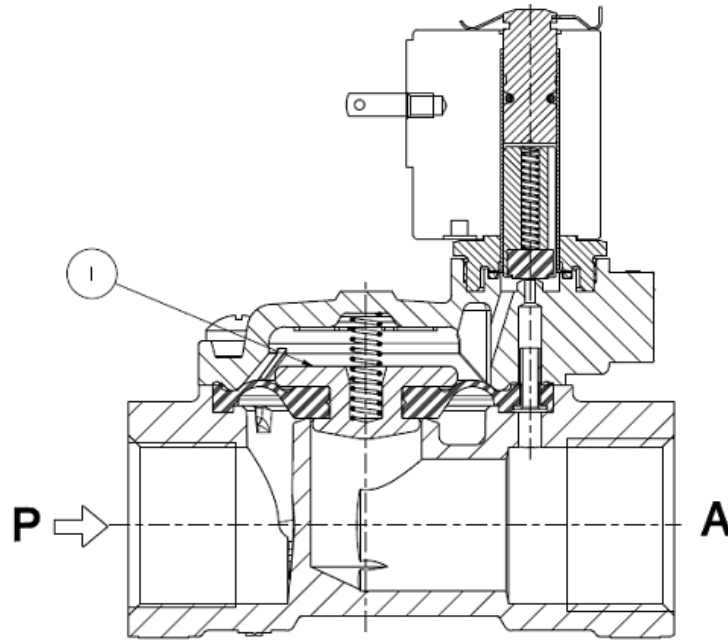
► **NOTES**

- Sealings : NBR = Nitrile-butylene elastomer. EPDM = Ethylene-propylene elastomer (WRAS/KTW certified compound)
- The operation with gaseous media, at high pressure without any outlet restriction, can reduce the diaphragm life.
- 1 - **WRAS** certified solenoid valve (certificate n. 1411048).

# L182

## LATCHING MODEL

### ► SPARE PARTS



### Kit description

Diaphragm assembly

|         |      |          |
|---------|------|----------|
| L182D61 | G3/8 | 2844306R |
|         | G1/2 | 2844306R |
|         | G3/4 | 2299708R |
| L182B61 | G3/8 | 2844302R |
|         | G1/2 | 2844302R |
|         | G3/4 | 2299701R |
|         | G 1  | 2380101R |

### Kit P.N.

### Consisting of:

Diaphragm assembly pos. 1

### ► MOUNTING

- Solenoid valve can be mounted in any position; vertical with coil upwards preferred.

THE VALIDITY OF REPORTED DATA IS REFERRED TO THE DATE OF ISSUE. POSSIBLE UPDATES ARE AVAILABLE ON REQUEST.