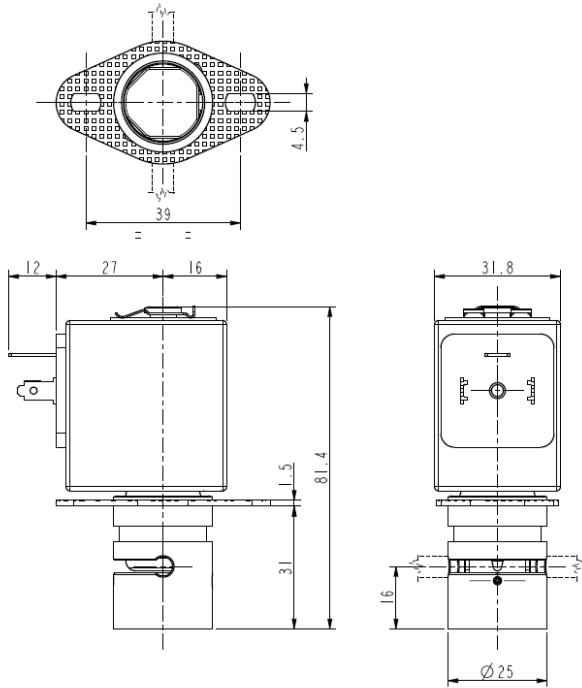




**PINCH SOLENOID VALVE**  
**2/2 – NC (Normally closed)**  
 Direct acting

**S10507-08**



► **GENERAL FEATURES**

Pinch solenoid valve, suitable to shut off media without producing neither turbulent flows, nor dead spaces.  
 High flow rate under the same conditions of internal diameter of different solenoid valves; the system allows a bi-directional through flow.  
 The valves are suitable for soft SILICONE tubings or others, similar as to elasticity and hardness (50 shore A).  
 Silent model.

**The tubing is the only material in contact with the fluid.**  
 The tubings are not included in our supply.

► **MOUNTING**

Solenoid valve can be mounted in any position.

► **MATERIALS**

*Body*  
*Pinching device*  
*Internal components*  
*Guide assembly*

Anodized aluminium  
 POM (reinforced acetal copolymer)  
 Stainless steel  
 Chemically nickel plated brass (Ni-P).

► **COIL**

*Continuous duty*  
*Encapsulation material*  
*Coil insulation class*  
*Ambient temperature*  
*Electric connection*  
*Protection degree*  
*Voltages DC*

ED 100%  
 PET (polyethylene terephthalate) fiberglass reinforced F (140°C)  
 -10°C +60°C  
 DIN 46340 - 3 poles connectors (EN175301-803)  
 IP 65 (DIN 40050) with connectors  
 12-24V (+10% -5%)  
 (Other voltages on request)

TUBINGS		Pinching strength (kg)	Series and type		Power absorption (W)	Notes	Weight (kg)
I.D. (mm)	E.D. (mm)		Valve	Coil			
1,5	3,9	0,650	S105-08	Z530A	9	1	0,270
2,5	4,1		S105-07			2	

► **NOTE**

- 1 – Special silenced model
- 2 – Tubing slot 2,4mm – Tubing seat Ø 4,2 mm.
- In case the tubing is not placed in its seat, the solenoid valve could operate incorrectly.

THE VALIDITY OF REPORTED DATA IS REFERRED TO THE DATE OF ISSUE. POSSIBLE UPDATES ARE AVAILABLE ON REQUEST

0605/1703

