



MICRO SOLENOID VALVE

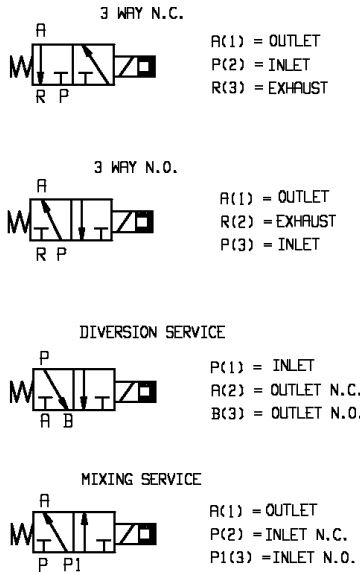
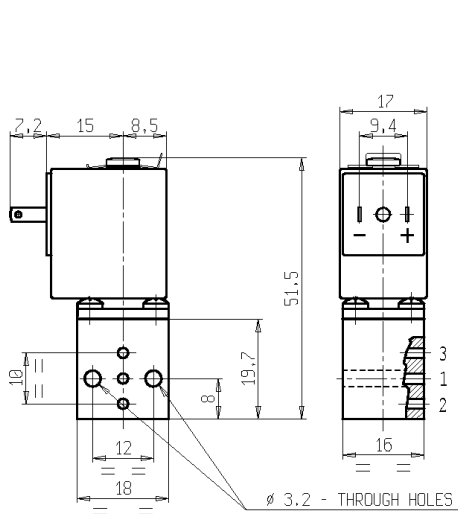
3/2 - US (Universal service)

Direct acting

Sub-base mounting

V367

LATCHING MODEL



► GENERAL FEATURES

Direct acting micro solenoid valve; minimum overall dimensions.
Suitable for mounting on a sub-base or directly on the equipment.
Valve delivered with sealing O-rings.
Suitable to shut off liquid and gaseous fluids (verify the compatibility of fluid with materials in contact).

► TECHNICAL FEATURES

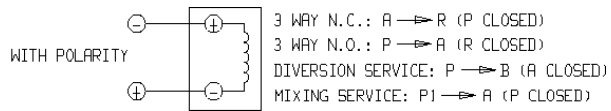
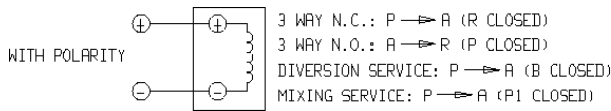
Maximum allowable pressure (PS) 16 bar
Opening time from ~5ms to ~10ms
Closing time from ~5ms to ~10ms
Fluid temperature -10°C +90°C
Max viscosity 3°E (22 cStokes o mm²/s)

► MATERIALS IN CONTACT WITH FLUID

Body Brass
Sealing NBR
Internal components Brass, PEI (Polyetherimide) and stainless steel
Seat Brass
Core tube Brass
Shading ring Copper

► COIL

Duty Latching model, polarized type, operating by impulses
Minimum energizing time 20ms
Encapsulation material PP-V0 (self-extinguishing polypropylene)
Insulation class A (105°C)
Ambient temperature -10°C +60°C
Electric connections DIN 46340 - 3 poles micro plug connector
Protection degree IP 65 (EN60529) with micro plug connector
Voltages DC 6-12V (+10% -10%)
(Other voltages on request)



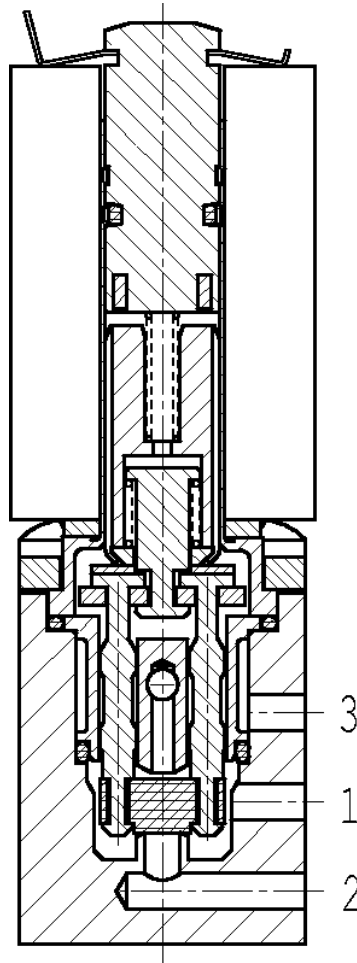
Port size	Orifice size (mm)	Differential pressure (bar)				Kv (m ³ /h)	Series and type		Power absorption			Sealings	Notes	Weight (kg)	
		Δp min	Δp max				Valve	Coil	AC (VA)		DC (W)				
			Gases		Liquids				Inrush	Holding					
			AC	DC	AC										DC
-	1,2	0	-	2,5	-	2,5	0,04	V367B01G	Z070A	-	-	3	NBR	1	0,090

► NOTES

- These micro-solenoid valves are not suitable for stagnating media subject to vaporization which deposit solid, calcareous, incrusting residues or similar.
- Sealings: NBR = Nitrile-butylene elastomer.
1 - If used as NO only, the maximum operating pressure is 6 bar.



► SECTIONAL VIEW



► INSTALLATION

- Solenoid valve can be mounted in any position; vertical with coil upwards preferred.

THE VALIDITY OF REPORTED DATA IS REFERRED TO THE DATE OF ISSUE. POSSIBLE UPDATES ARE AVAILABLE ON REQUEST.